



2022 Annual Report

MISSION

The mission of CCRE is to **provide interdisciplinary social science research and evaluation support for community-based projects**. CCRE strives to be the leading source of expertise on community transformation in the Mid-South.

IMPACT

\$1M

ANNUAL
BUDGET

\$55M

IN NEW GRANTS
SUPPORTED

9

COLLABORATIONS
IN 2022

11

STAFF & AFFILIATE
RESEARCHERS

SERVICES

Development

- Needs Assessments, Proposal Development, Instrumentation, Research Design, Data Pipelining, Focus Groups

Reporting

- Data Analytics, Survey Research, Mixed Methods, Computational GIS, Automated Reporting, Modeling & Data Science

Dissemination

- White Papers, Dashboards, Visualizations, Publications, Economic Impact, Data-Driven Facilitation

FROM THE EXECUTIVE DIRECTOR

In 2022, the CCRE experienced tremendous growth in number of collaborative partners, grant dollars awarded, and research opportunities across the greater Mid-South region. For the first time, we report an annual budget over \$1M – our total efforts approach \$5M over the past decade. We are proud to expand our partnerships across the Mid-South and broader Delta, helping to support existing community projects and help bring new dollars to our region. Two rigorous needs assessments conducted by CCRE led to two substantial community awards in 2022: a \$30 million Promise Neighborhood in Leflore County, MS by Delta Health Alliance, as well as GROWWTH, the University's largest grant in UofM history, led by CPLS Dean Richard Irwin. Both awards have begun implementation, and CCRE is excited to support these major projects over the next several years.

CCRE continues to provide support in all areas of research. Building on a long portfolio of evaluation of health and educational interventions, we are rapidly adding expertise in the areas of data science, health policy, workforce development, data management, and results-based accountability. Our 2023 future looks bright: two major Memphis-focused federal awards, which CCRE pledged support during grant submission, were awarded in 2022. We are grateful to continue expanding our capabilities, team members, expertise, and impact to build on our strong foundation. We look forward to another wonderful year ahead!

Sincerely,

Wesley James, Ph.D.
Exec. Director, CCRE
Professor, Sociology





- School of Music
- School of Public Health
- Public Safety Institute

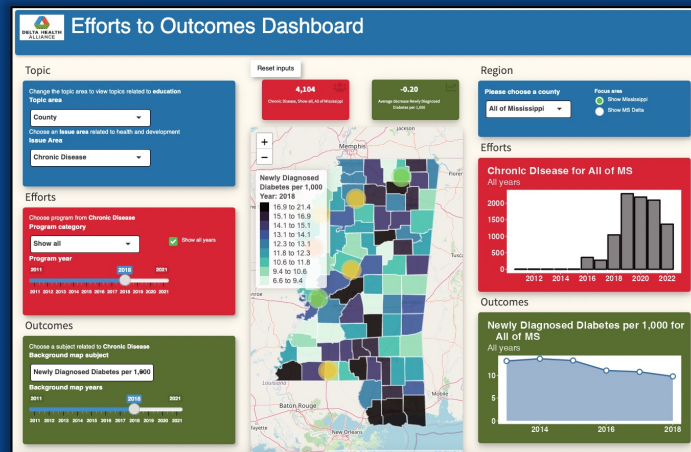


**WANT TO
COLLABORATE?
CONTACT US!**

111 Racine Street, Memphis, TN 38111
www.memphis.edu/ccre
ccre@memphis.edu

DATA SCIENCE

CCRE data scientists, using R and Python, built 3 dashboards and automated tools for community partners in 2022.



Above: A dashboard for Delta Health Alliance stakeholders.

Below: CCRE staff and Sociology students visited Washington County, Mississippi to administer a Lunch Plate Study.

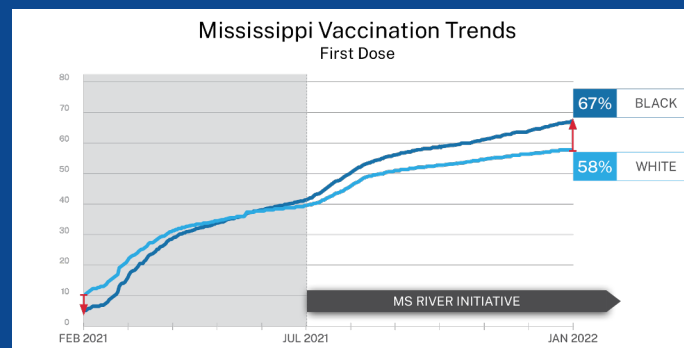


EDUCATION

Employing both quantitative and qualitative methods, CCRE supports three cradle-to-career Promise Communities, serving over 13,000 students.

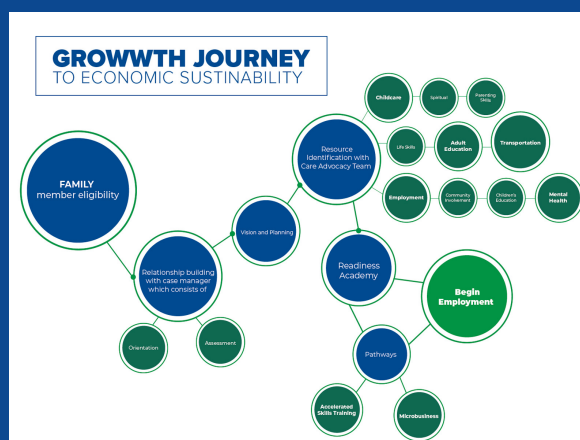
PUBLIC HEALTH

CCRE's four public health specialists explore how social determinants of health shape outcomes across the life course.



Above: CCRE conducted real-time surveillance of COVID-19 vaccination patterns to support a COVID-19 vaccination initiative.

Below: CCRE research underpinned the University's \$25 million GROWTH award, the largest grant in the history of the University.



WORKFORCE DEVELOPMENT

CCRE supports the GROWTH program, a \$25M workforce development initiative in West Tennessee. CCRE and the UofM are also partnering with Shelby County Health Department on a \$13M award to strengthen the public health workforce, expected to begin spring 2023.