



Center for Community Research
and Evaluation

Vaccination Update

Jonathan Bennett

Joseph Branson

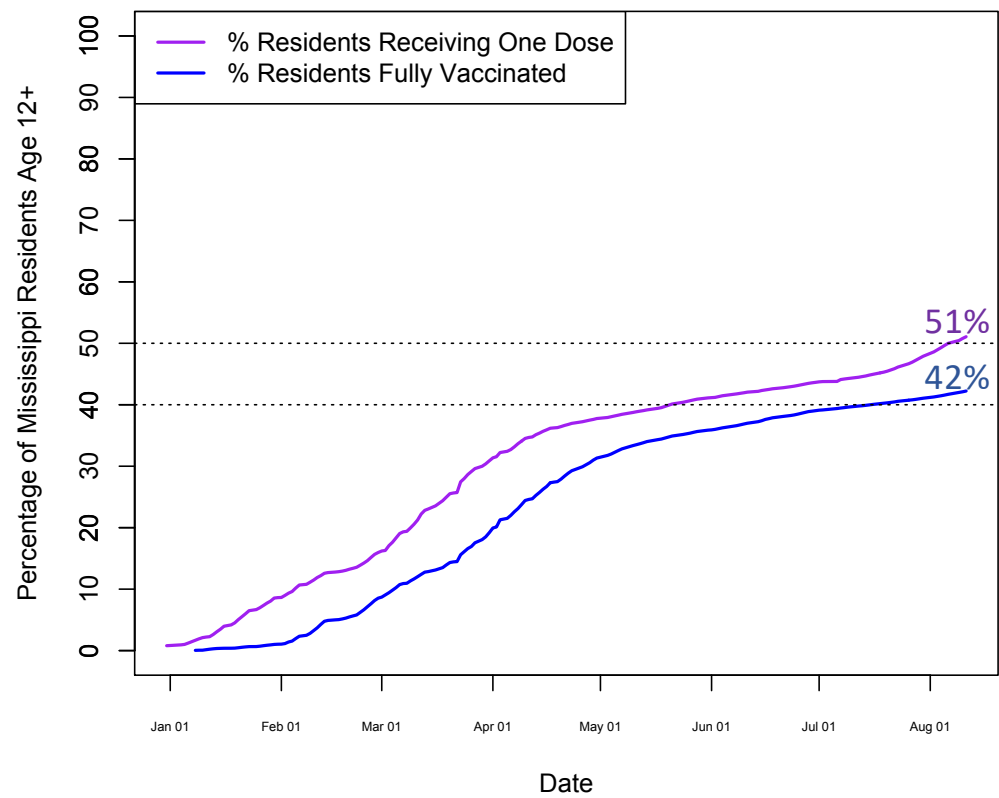
August 12, 2021

**Improvements in vaccination rates continue to be promising, especially for African-Americans.
Over half the eligible population of Mississippi has initiated vaccination.**

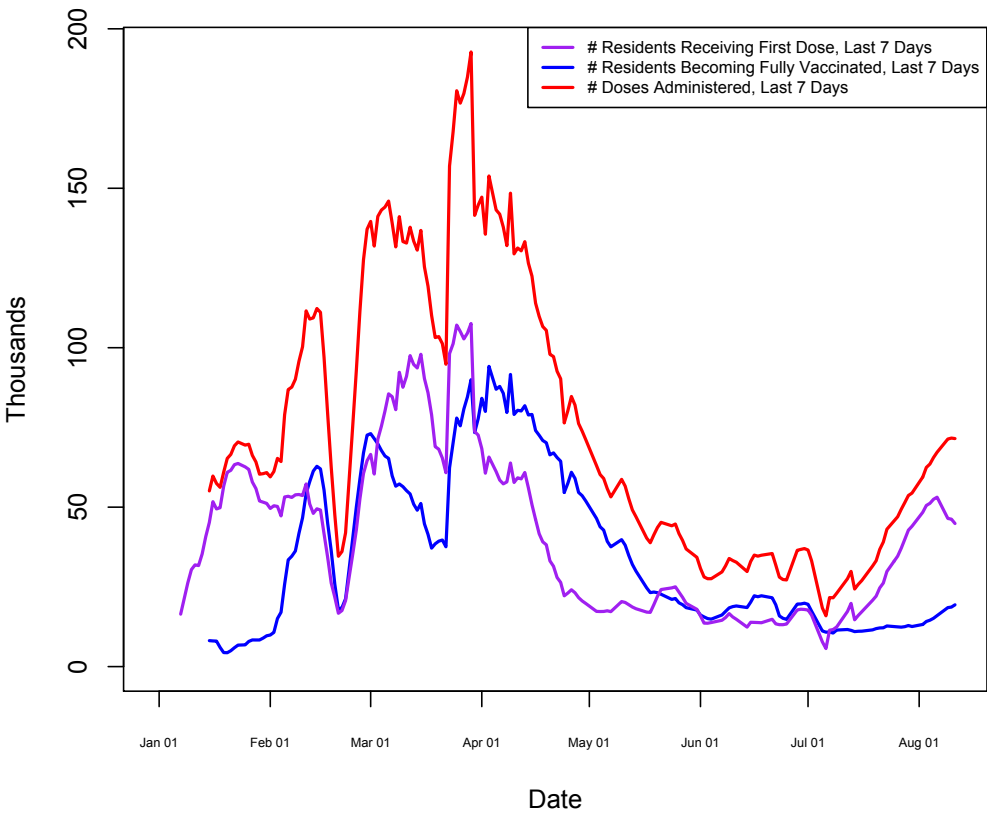
We now use eligible (12+) population rather than total population. Population is estimated from MSDH/MSTAHRs.
We have tracked MSDH records through January 2021 to provide better historical coverage. Data through August 11, 2021.

Vaccinations continue to move in the right direction overall, although first-dose vaccinations have trailed a little in the most recent days from their early August peak.

Mississippi Vaccination Trends, Overall

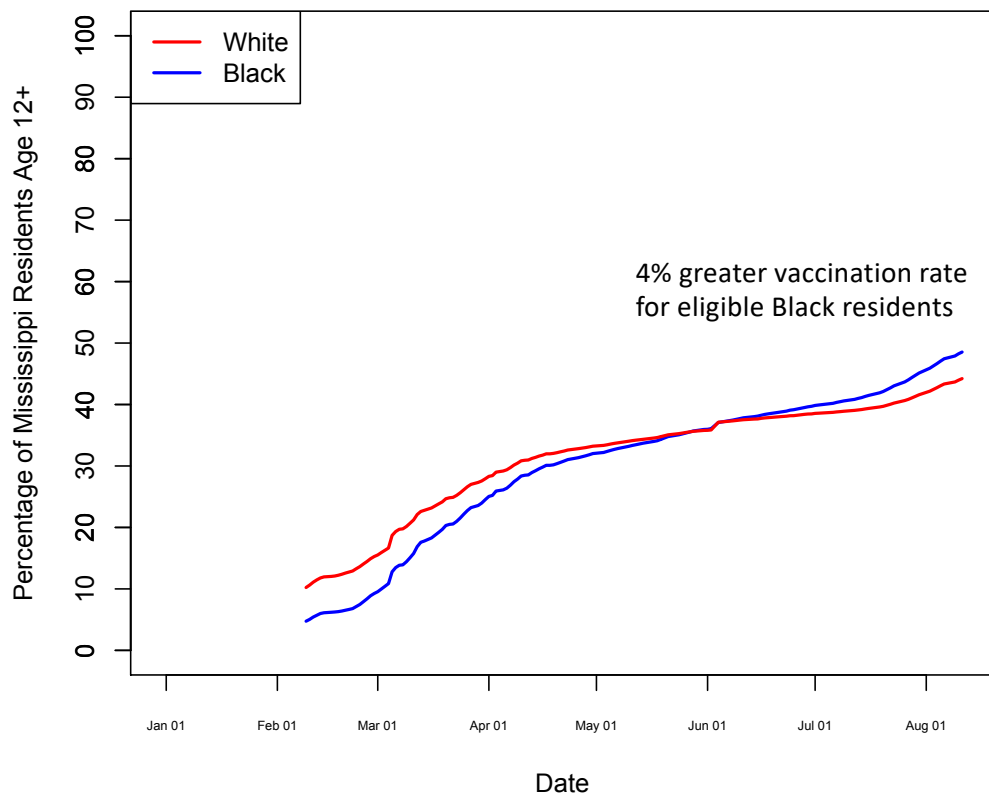


Mississippi Vaccination Trends By Week



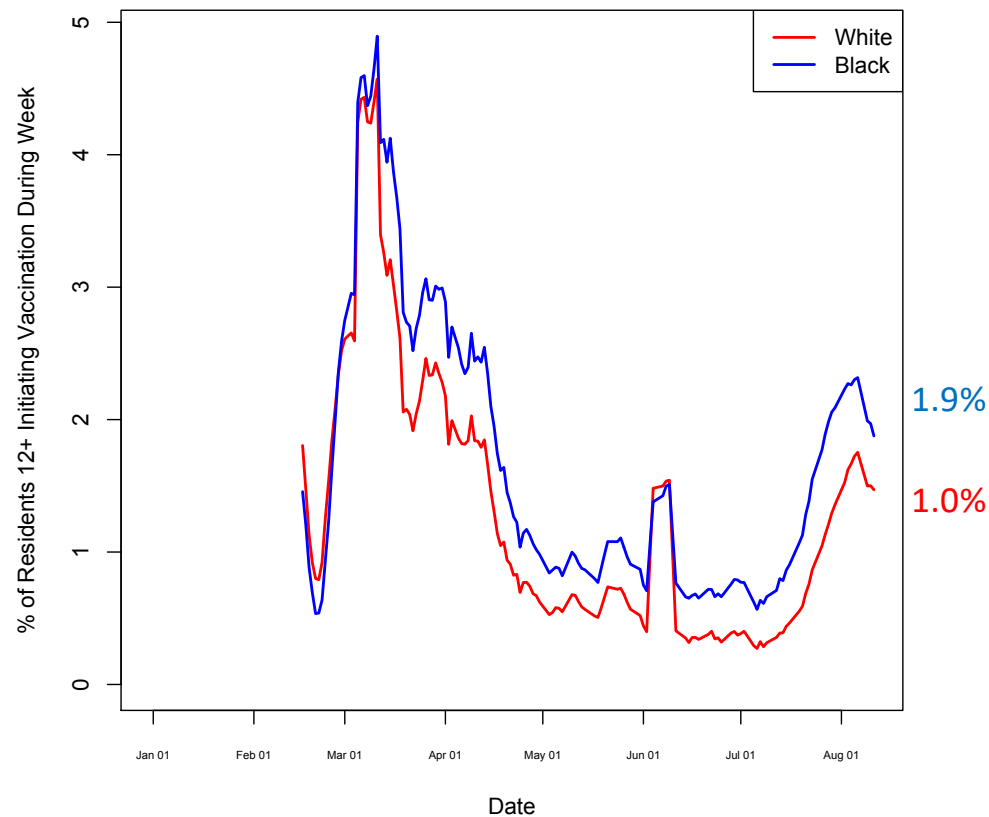
In recent weeks, adjusting for population size, African-Americans are initiating vaccination (first dose) at almost double the rate of White residents. 1.9% of the Black population was vaccinated last week, but only 1.0% percent of the White population.

Vaccination, First Dose, by Race

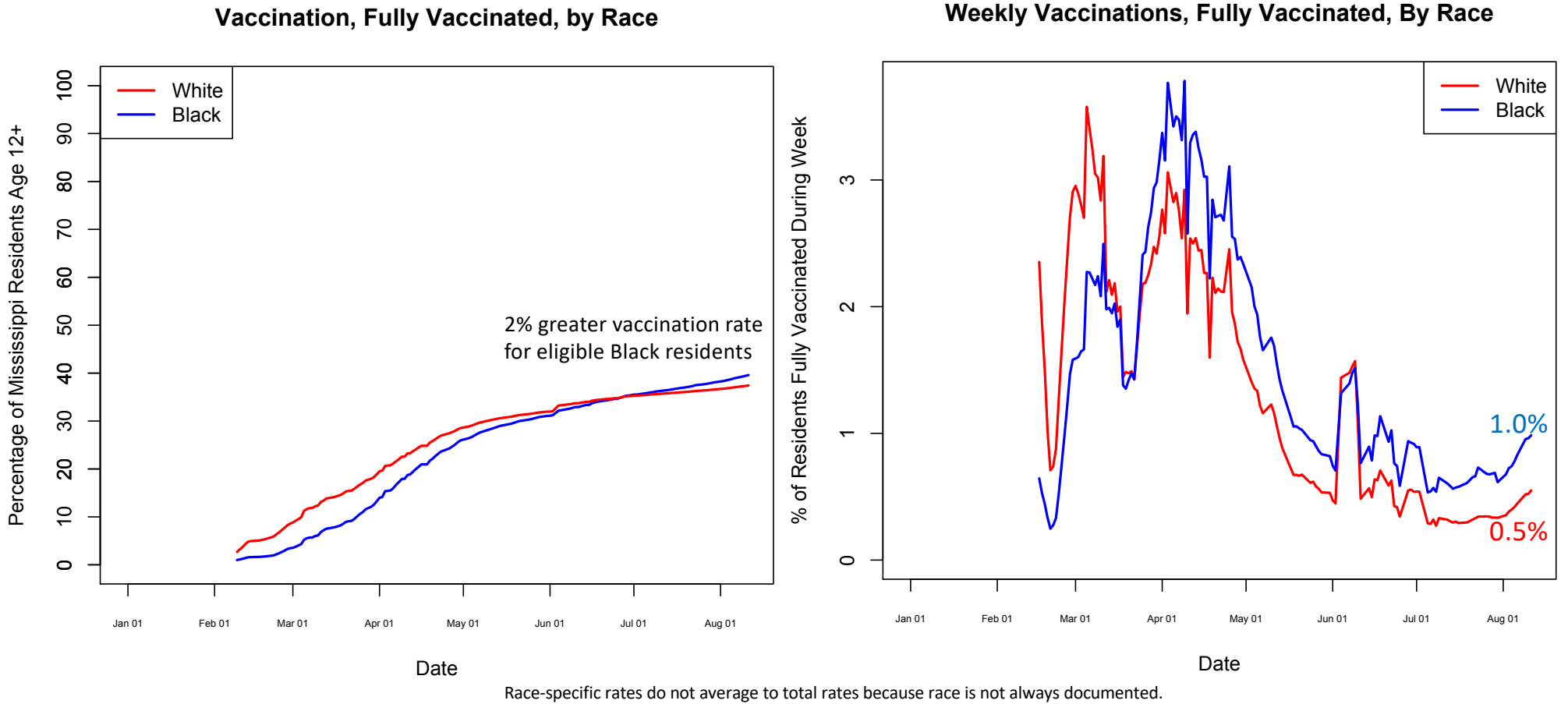


Race-specific rates do not average to total rates because race is not always documented.

Weekly Vaccinations, First Dose, By Race



Trends are similar for fully vaccinated rates. We expect the racial gap for this measure to grow in the coming weeks as individuals initiating vaccination last month to start returning for their second dose.



Vaccination Since July 15

		July 15	August 11	Change
Total	% Eligible Pop. Fully Vaccinated	40%	42%	+2%
	% Eligible Pop. Initiating Vaccination	45%	51%	+6%
White	% Eligible Pop. Fully Vaccinated	36%	37%	+2%
	% Eligible Pop. Initiating Vaccination	39%	44%	+5%
Black	% Eligible Pop. Fully Vaccinated	36%	40%	+4%
	% Eligible Pop. Initiating Vaccination	41%	49%	+7%

Race-specific rates do not average to total rates because race is not always documented. All percentages are rounded.

Vaccination Trends by Designated Market Area

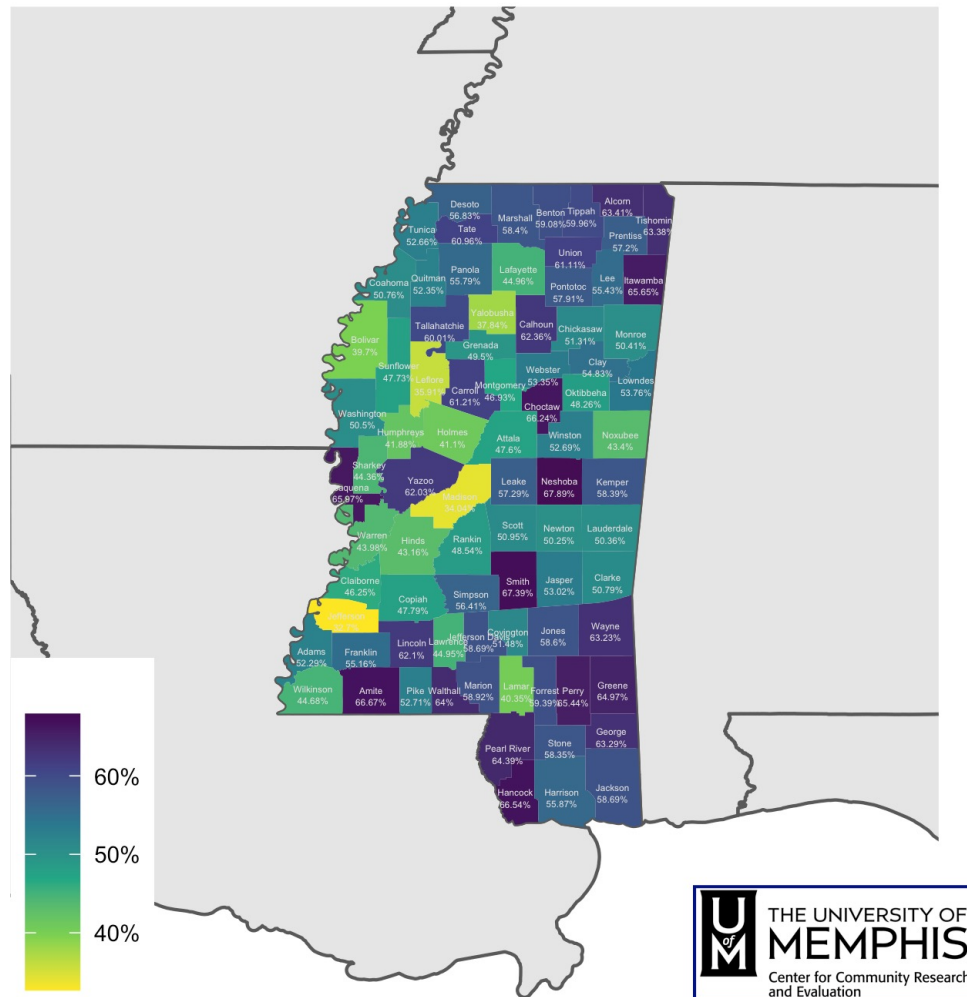
Mississippi portion of DMA only. This may vary substantially from overall DMA trends.

DMA data provided by Clearwater.

	Eligible Population (12 and up)	% eligible pop. vaccinated, first dose, total	% eligible pop. vaccinated, first dose, last 7 days	% eligible pop. vaccinated, first dose, since July 15
Baton Rouge	18,118	42.4%	2.1%	6.1%
Biloxi	312,880	42.9%	1.8%	5.6%
Columbus	403,923	45.3%	1.4%	4.9%
Greenwood	144,702	52.8%	1.6%	5.9%
Hattiesburg	250,445	45.2%	2.2%	7.0%
Jackson	764,718	52.6%	1.7%	6.8%
Memphis	374,207	44.1%	1.4%	5.0%
Meridian	125,861	45.7%	1.7%	5.7%
Mobile	31,965	36.1%	1.5%	4.1%
New Orleans	88,891	34.6%	1.8%	5.8%

Unvaccinated, % of population

August 11, 2021



Bluer counties are most in need of vaccination outreach.

Source: MSDH, 'Mississippi State Department of Health COVID-19 Vaccination Reporting', updated 8/11/21

Eligible pop. 12+

From August 5 to August 11



Eligible pop. 12+

Source: MSDH, 'Mississippi State Department of Health COVID-19 Vaccination Reporting', updated 8/11/21

From July 15 to August 11



Eligible pop. 12+

Source: MSDH, 'Mississippi State Department of Health COVID-19 Vaccination Reporting', updated 8/11/21